



# CHOICE PROPERTIES

*Estate Agents*

Haven House, 11 Park Lane,  
Alford, LN13 9DN

Price £595,000



Choice Properties are delighted to offer for sale this most capacious and attractive period home located in the charming historic market town of Alford. Offering 5 bedrooms together with 4 reception rooms and two kitchens this delightful property stands in good sized private gardens with large driveway providing ample parking space for many vehicles. Ideally located for the good primary and secondary schools, local amenities and facilities that Alford has to offer we highly recommend viewing this lovely home.

With the benefit of Gas Central Heating the spacious accommodation comprises:-

#### **Entrance Hall**

3'8" x 7'11"

Front Door. Inner door leading to main hall.

#### **Hall**

20'4" x 9'11"

Large grand entrance hall with wide staircase leading to the landing.

#### **Lounge**

17'4" x 21'7"

Attractive feature fireplace

#### **Dining Room**

17'4" x 15'0"

With attractive feature fireplace.

#### **Ground Floor Cloakroom w.c.**

With low level flush and wash hand basin.

#### **L-shaped Kitchen**

33' x 12'9" x 9'5"

With farmhouse style cream kitchen featuring wall and base units with work surfaces over. Aga set in chimney breast with tiled splashback and mantel over. Separate range cooker with gas hob. Stainless steel sink unit and drainer. Fitted Cupboard. Space for American Fridge/freezer. Fitted Cupboard. Open plan to Sitting room/Conservatory. Rear Access door back garden. Door to back hall.

#### **Utility Room**

14'0" x 12'8"

Good sized utility space with separate w.c and wash hand basin. Access to the back hall with door to outside.

#### **2nd Kitchen**

8'0" x 13'0"

With 2nd staircase to the landing.

#### **Living Room**

21'7" x 17'4"

With log burner set in attractive feature brick fireplace. Fitted Cupboards. French doors to :-

#### **Conservatory**

16'8" x 11'6"

With French Doors to the rear garden.

#### **Sitting Room**

18'4" x 13'10"

#### **Back Hall**

13'10" x 3'5"

Door to outside

#### **Landing**

30'5" x 9'11"

#### **Bedroom 1**

14'10" x 21'2"

With feature fireplace

#### **Bedroom 2**

15'3" x 15'9"

With feature fireplace

#### **Bedroom 3**

15'8" x 14'11"

Window to front, door to:

#### **Bathroom**

14'4" x 9'0"

Window to side, door to:

#### **Bedroom 4**

13'7" x 13'6"

#### **Bathroom**

10'1" x 8'6"

Window to rear, door to:

#### **Nursery**

7'1" x 13'0"

#### **Bedroom 5**

12'4" x 13'0"

#### **Driveway**

With ample parking for many vehicles.

#### **Gardens**

This attractive period home stands in good sized private gardens. Double gates give access to a large driveway at the front of the property providing ample parking space with additional parking to the side. To the left hand side of the property is a lovely raised patio area providing a lovely space to relax. The gardens continues to the rear and open out on to a large well maintained private lawn featuring colourful flower and shrub borders and well established trees. There is also access from the rear of the garden on to Park Road. To the right of the property sits another patio area to enjoy the garden which leads off the Conservatory. Please also note the grounds are large enough to separate and create a building plot (subject to planning permission) for another property with access to Park Road.

#### **Tenure**

Freehold.

#### **Council Tax Band**

Local Authority - East Lindsey District Council,

The Hub,

Mareham Road,

Horncastle,

Lincolnshire,

LN9 6PH

Tel. No. 01507 601 111

Website: [www.e-lindsey.gov.uk](http://www.e-lindsey.gov.uk)

Council Tax Band - According to the Valuation Office Agency Website the property is currently in Council Tax Band F. Amount payable 2024/25 - £3,239.38

#### **Viewing Arrangements**

By appointment through Choice Properties on 01507 462277.

#### **Opening Hours**

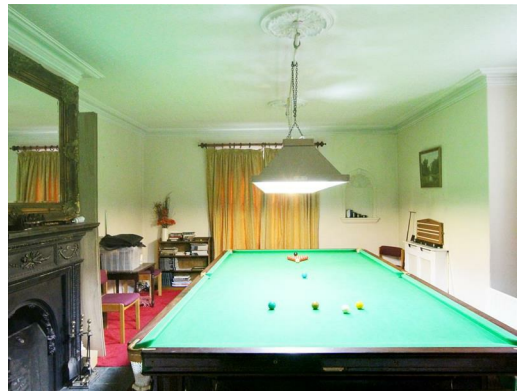
Monday to Friday 9.00 a.m to 5.00 p.m.

Saturday 9.00 a.m. to 3.00 p.m.

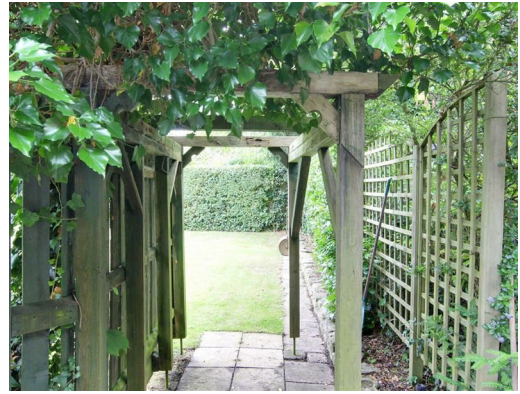
#### **Making an offer**

If you are interested in making an offer on this property please have a chat with us and we will be happy to start the negotiations for you. Under money laundering regulation we will ask you to provide us with formal photographic ID by way of either a passport or driving licence. If you are travelling from afar we would advise bringing this documentation with you just in case this home is perfect for you.

We would also like to make you aware that we will require details of your estate agents, proof of funds should you be a cash buyer and solicitors details, as this helps us to start the transaction quickly for you.







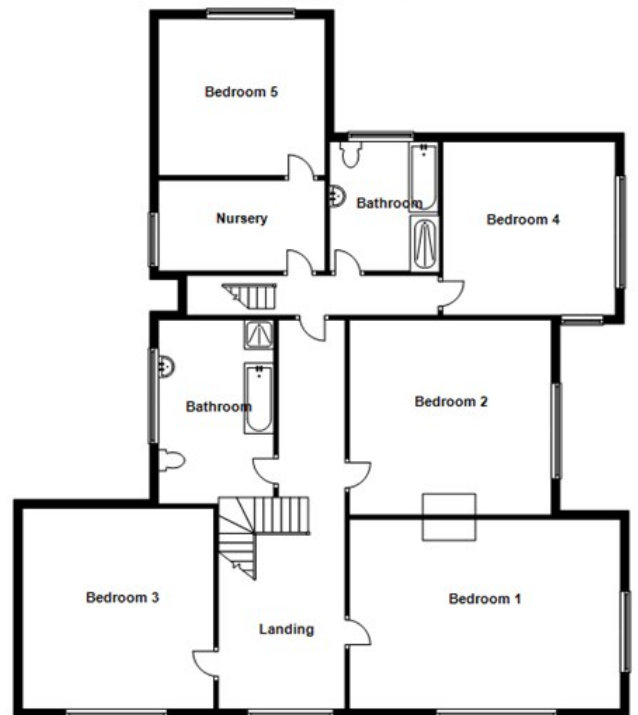
**Ground Floor**

Approx. 229.1 sq. metres (2572.6 sq. feet)



**First Floor**

Approx. 166.3 sq. metres (1789.6 sq. feet)



Total area: approx. 405.4 sq. metres (4363.2 sq. feet)

# Directions

Use the postcode LN13 9DN for directions to the property and you will find Haven House towards the bottom on the right hand side.

